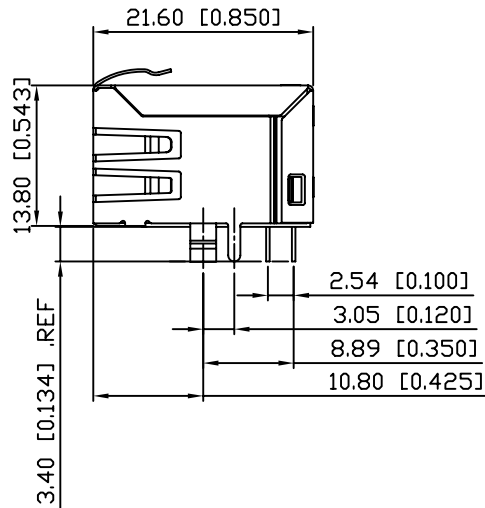
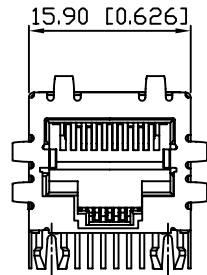
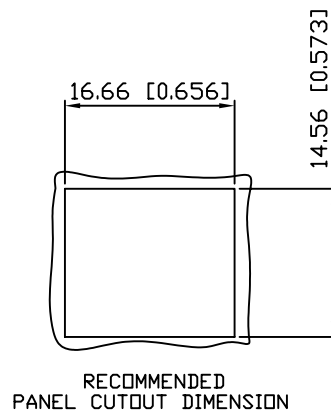
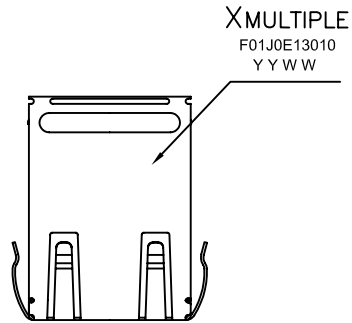
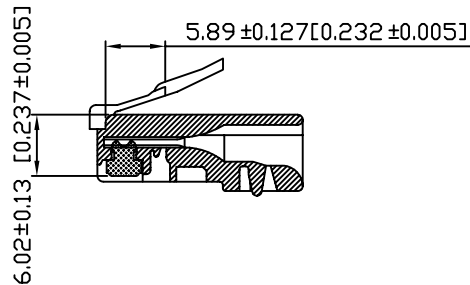


1. MECHANICAL DIMENSIONS :



RECOMMENED PLUG DIMENSION:



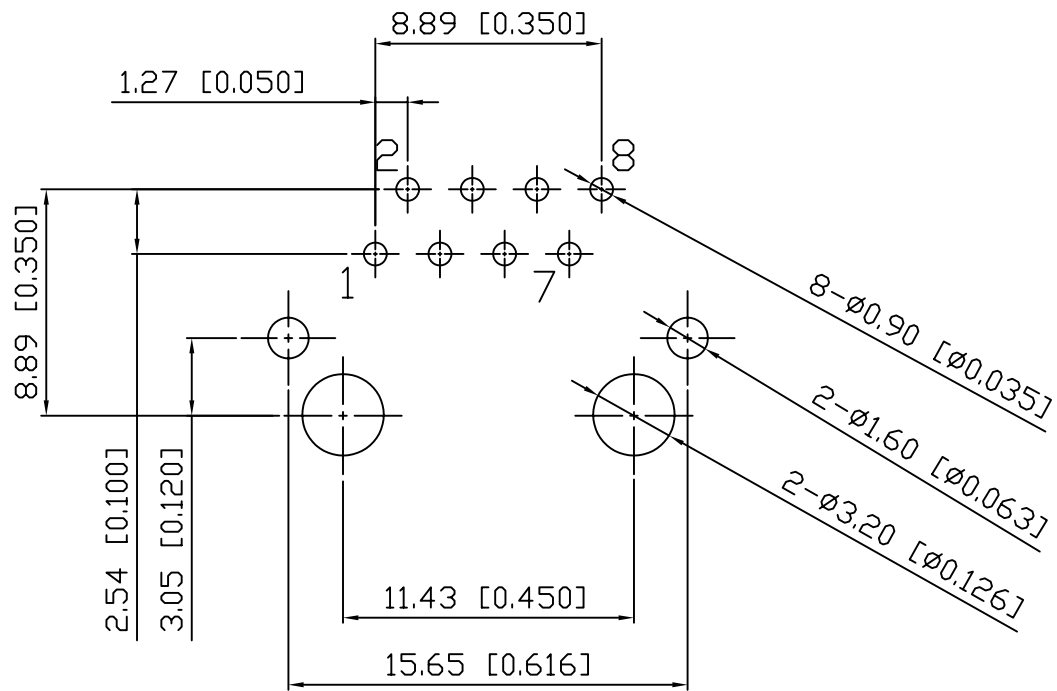
NOTES:

- MATERIALS:  
HOUSING: PBT POLYESTER UL94V-0  
MIXED GLASS FIBER.  
STANDARD COLOR-BLACK.  
CONTACTS: 0.35mm THICK PHOS-BRONZE PLATED  
WITH 15u" GOLD AND TIN  
IN SOLDER AREA.  
SHIELD: 0.25mm THICK COPPER ALLOY,  
PLATED WITH NICKEL.
- OPERATING TEMPERATURE: 0°C~70°C
- CAVITY CONFORMS TO FCC RULES AND REGULATIONS  
PART 68, SUBPART F.
- UNSPECIFIED TOLERANCE: .XX ±0.25[0.010]  
.X ±0.30[0.012]

RoHS Compliant

XMULTIPLE			CONNECTING THE INFORMATION AGE	
XMULTIPLE ASIA 4F, No. 347, Yang Guang St., Neihu, Taipei, Taiwan 11475		XMULTIPLE USA 1420 Los Angeles Ave., Suite G, Simi Valley, CA 93065		G/NO:
THIS DRAWING IS A CONTROLLED DOCUMENT.				DWG NO: XRJF-01J-0-E13-010-TZ
TITLE: SINGLE PORT, RJ45, SHIELDED, WITHOUT LED WITH TRANSFORMER, SIDE ENTRY PCB JACK				DRAWN: IVAN
PART NO: XRJF-01J-0-E13-010-TZ				CHKD: TARA
		UNIT	SHEET	REV
mm [Inch]		1 of 3	01	DATE: Aug.13,08

2. PCB LAYOUT :



SUGGESTED PCB LAYOUT  
(TOP VIEW)  
DIMENSIONAL TOLERANCE: .XX ±0.08[0.003]

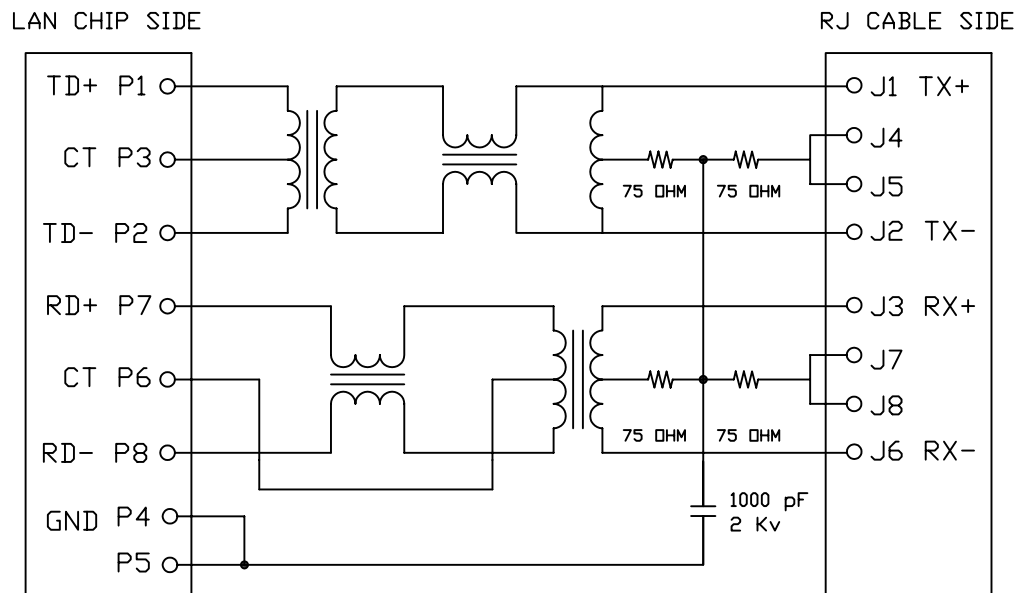
RoHS Compliant

		CONNECTING THE INFORMATION AGE	
THIS DRAWING IS A CONTROLLED DOCUMENT.			
TITLE: SINGLE PORT, RJ45, SHIELDED, WITHOUT LED WITH TRANSFORMER, SIDE ENTRY PCB JACK		G/NO:	
PART NO: XRJF-01J-0-E13-010-TZ		DWG NO: XRJF-01J-0-E13-010-TZ	
		UNIT: mm [Inch]	SHEET: 2 of 3
		REV: 01	DATE: Aug.13,08

DRAWN: IVAN

CHKD: TARA

### 3. SCHEMATIC:



### 4. ELECTRICAL CHARACTERISTICS :

- TEST NOTES:(25±5°C)
- 1.TR:(100KHz,0.1V);  
PINS:(P1-P2):(J1-J2)=1:1±3%  
PINS:(P7-P8):(J3-J6)=1:1±3%
  - 2.LX:(100KHz,100mV,8mA, DC Bias)  
PINS: (P1,P2),(P7,P8)=350uH MINIMUM
  - 3.DCR:  
PINS:(J1-J2),(J3-J6)= 1.2 OHMS MAXIMUM
  - 4.HIPOT:  
PINS(P1,P3,P2)TO(J1,J2)=1500VAC FOR 60 SECONDS  
PINS(P7,P6,P8)TO(J3,J6)=1500VAC FOR 60 SECONDS
  - 5.INSERTION LOSS:  
-1.0dB MAXIMUM AT 0.3MHz TO 100MHz;
  - 6.RETURN LOSS:  
-20dB MINIMUM AT 1MHz TO 30MHz;  
-15dB MINIMUM AT 30MHz TO 60MHz  
-10dB MINIMUM AT 60MHz TO 80MHz
  - 7.CROSS TALK:  
-30dB MINIMUM AT 1MHz TO 100MHz
  - 8.COMMON TO COMMON MODE REJECTION:  
-30dB MINIMUM AT 1MHz TO 100MHz

XRJF-01J-0-E13-010-TZ

PRODUCT SERIES  
F : TAB DOWN WITHOUT LED

NUMBER OF PORTS  
MECHANICAL TYPE  
01J : 1 PORT FOR XRJF OR XRJG  
W/HORIZONTAL LED PIN

LED COLOR OPTION

CUSTOMER CODE

SPECIAL CODE  
0 : STANDARD

SHIELDED TYPE  
1 : Y=3.05mm, EMI FINGER  
ON ALL SIDE

LED POLARITY  
0 : W/O LED

CIRCUIT TYPE



## RoHS Compliant

				MULTIPLE ASIA 4F, No. 347, Yang Guang St., Neihu, Taipei, Taiwan 11475
THIS DRAWING IS A CONTROLLED DOCUMENT.				G/NO: DWG NO: XRJF-01J-0-E13-010-TZ
TITLE: SINGLE PORT, RJ45, SHIELDED, WITHOUT LED WITH TRANSFORMER, SIDE ENTRY PCB JACK				DRAWN: IVAN
PART NO: XRJF-01J-0-E13-010-TZ				CHKD: TARA
	UNIT mm[Inch]	SHEET 3 of 3	REV 01	DATE: Aug.13,08